

WebAccess Upgrade

An upgrade to Deltaport WebAccess is planned for Monday September 29th, 2008 starting at 16:30 hrs. The upgrade is scheduled for 3 hours and during that period WebAccess will be unavailable.

The purpose of this upgrade is to allow external parties to guarantee import demurrage by Bill of Lading (B/L) number. You can find this new feature by following the steps below:

To Guarantee Import Demurrage

Step 1: Guarantee by B/L menu

- Login into WebAccess → Click on the Containers menu → click on the Guarantee by B/L menu option

The screenshot shows the Deltaport WebAccess interface. The top navigation bar includes 'Today | Ships' and a highlighted 'Containers' menu item. The left sidebar contains a menu with options: 'Guarantee By B/L' (highlighted), 'Availability Inquiry', 'EDO/Booking Details', 'Container Details', and 'Maintain List'. Below the menu is a 'Search For' section with radio buttons for 'Equipment' (selected), 'Booking', and 'Gate Transactions', along with a search input field and a 'Search' button. The main content area shows the breadcrumb 'WebAccess > Containers > Guarantee By B/L' and the timestamp 'Sep 26, 2008 10:43:41 AM PDT'. The title is 'Import Demurrage Guarantee by B/L'. The form contains two input fields: 'Container Nbr' and 'B/L Nbr', followed by a 'Submit' button.

Step 2: Provide container number or bill of lading or both

- **Option 1.** Enter the container number in the Container Nbr field - or - Enter the B/L number into the B/L number field → click the submit button.

*If the container is unknown or is in the community or is not an Import Full, WebAccess will display the message **“Not a valid Import container for Guarantee”**.

- **Option 2.** Enter both a container number and a B/L number → click on the submit button. WebAccess will search for the combination of B/L and container.

*If the combination of B/L and container does not exist, WebAccess will display the message **“Container and B/L number do not match”**.

Step 3: Create guarantee

This page displays all the information associated with the import container and the B/L number. All fields are read only except for the P.O. number field.

*The P.O. number is an optional field that can be used by customers to put in a personal reference number or left blank. If a P.O. number is not entered when the user clicks on the submit button, WebAccess will display a warning message **“P.O. Number is blank, do you want to continue?”**. Click “Ok” to proceed or click “Cancel” and return to the webpage.

- Verify that the information is correct → Click on the Submit Button

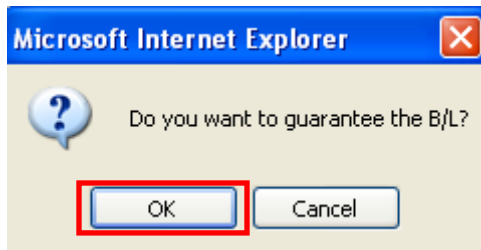
Import Demurrage Guarantee by B/L

B/L Nbr	SHYEA3A3958	Vessel Reference	CMYN374
Vessel/Voyage/Call	CMYN-373-1	Line	CSL
Customer ID	DLT	Customer Name	DELTAPORT
Guarantor	AAU	Guaranteed On	26-SEP-2008
Created By	AAU	PO Number	REF1

EQUIPMENT ATTACHED TO B/L			
EQUIPMENT NUMBER	SIZE	TYPE	HEIGHT
CCLU4139022	40	DR	86
CCLU4336335	40	DR	86
CCLU4598696	40	DR	86
CCLU4850745	40	DR	86
CCLU5001676	40	DR	86
CCLU5024157	40	DR	86

[Go Back](#) [Submit](#)

- Click on the OK button when prompted whether or not you want to guarantee the B/L.



- Click on the Ok button to complete Import Demurrage Guarantee and return to the Guarantee by B/L menu.

Import Demurrage Guarantee by B/L

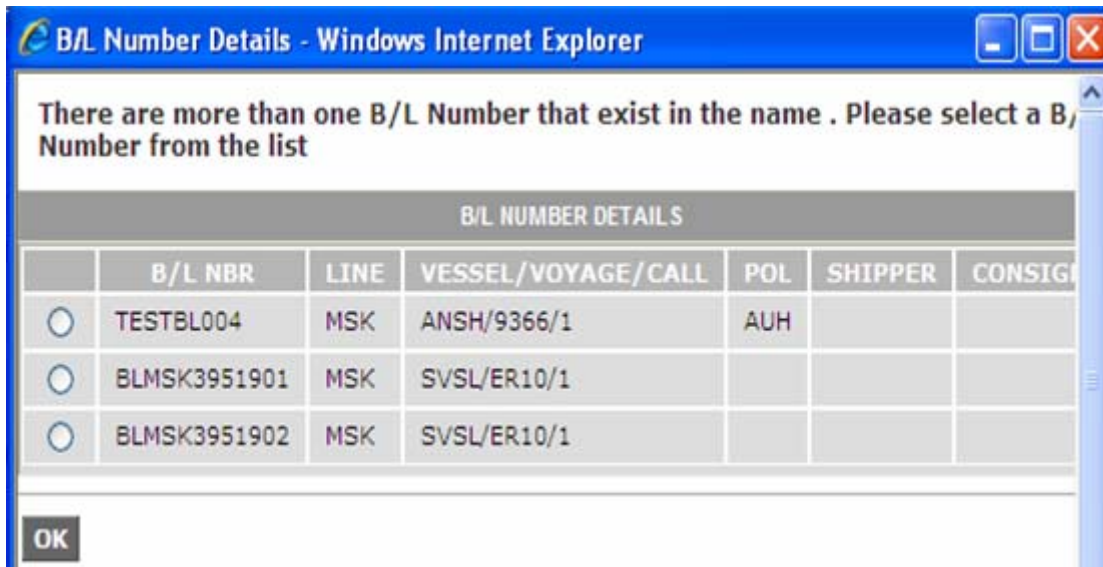
B/L Nbr	SHYEA3A3958	Vessel Reference	CMYN374
Vessel/Voyage/Call	CMYN-373-1	Line	CSL
Customer ID	DLT	Customer Name	DELTAPORT
Guarantor	AAU	Guaranteed On	26-SEP-2008
Created By	AAU	PO Number	REF1

EQUIPMENT ATTACHED TO B/L			
EQUIPMENT NUMBER	SIZE	TYPE	HEIGHT
CCLU4139022	40	DR	86
CCLU4336335	40	DR	86
CCLU4598696	40	DR	86
CCLU4850745	40	DR	86
CCLU5001676	40	DR	86
CCLU5024157	40	DR	86



Containers linked with multiple B/L's

If a container number has more than one B/L number, a window with the list of the B/L's will appear.



The following rule will be applied for containers that are linked with multiple B/L's:

- If a container belongs to multiple B/Ls and one of the B/Ls is guaranteed then the other B/Ls do not need to be guaranteed.

- For example, there are two B/Ls, B1 and B2 and containers C1 and C2 belong to B1 and containers C2 and C3 belong to B2.

B/L	Container No.
B1	C1
	C2
B2	C2
	C3

- All three containers have demurrage owing.
After B1 is guaranteed, C1 and C2 can be out-gated but C3 cannot. When B2 is guaranteed, C3 can then be out-gated.